

# CIVIC X - MOTOR MOUNT INSTALLATION MANUAL

## TOOLS REQUIRED

Set of car stands	M17 box wrench
Flat screw driver	M19 vox wrench
Phillips screw driver	Pry bar
M10 box wrench	

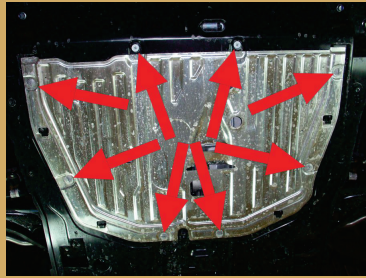
## MATERIALS REQUIRED

None

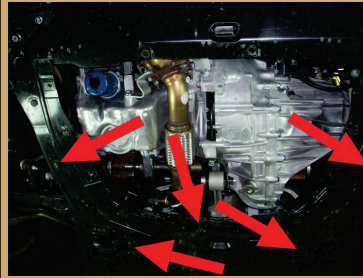
**1** When lifting the car always use stands to secure the car.



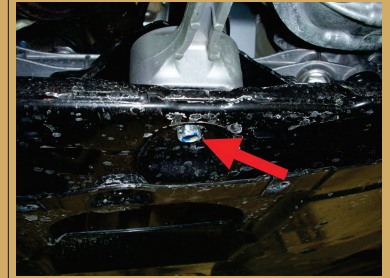
**2** Remove under tray.



**3** Remove the screw and the clips holding under guard.



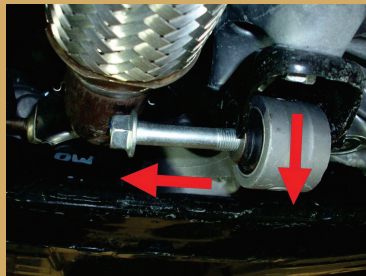
**4** Remove the bolt connecting factory mount to the frame.



**5** Loosen up the bolt connecting factory mount to the transmission. Slide it out as much as possible.



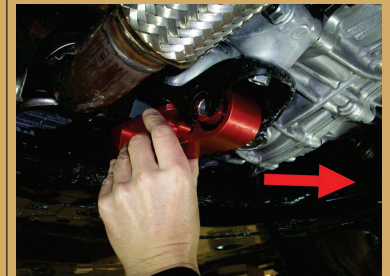
**6** Pull the motor mount down and remove the bolt completely. Remove the motor mount sliding it forward.



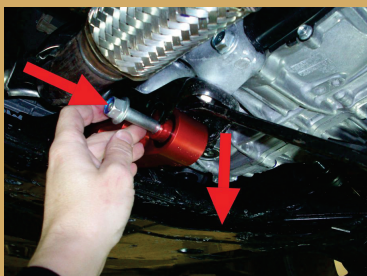
**7** Prepare the Boomba Racing motor mount.



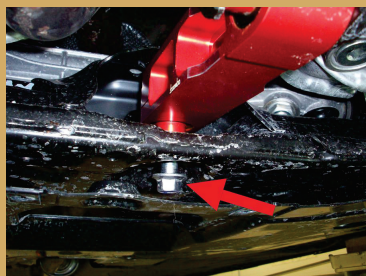
**8** Slide the Boomba Racing motor mount into the frame. Make sure the side marked "UP" is facing the top. Using prybar move engine forward if necessary.



**9** Pry the Boomba Racing motor mount down to insert the mounting screw.



**10** Insert the mounting screw into the frame.



**11** Secure the Boomba Racing motor mount to the frame and to the transmission.



**12** Reinstall the under tray.

